

CTDI Products

Features

- Modular design
- New XC2T card increases total bandwidth on the Line side to four T1s
- CSU/DSX functionality
- Up to 24 analog voice circuits — FXS and FXO
- Full feature router
- Multiple permanent virtual circuits
- DHCP & NAT IP address management
- Auto-sensing 10/100Base-T port
- Integrated Frame Relay Assembler / Disassembler (FRAD)
- Digital Crossconnect
- NEBS Level 3 Certified

XSP-100 SHARK Integrated Access Platforms

Integrated access has reached a new level of simplicity and functionality with the XSP-100 SHARK® Integrated Access Device from CTDI. The SHARK IAD enables the delivery of voice, high-speed data, and Internet access connections to end customers over a single network connection.



Flexible

The XSP-100 SHARK IAD was designed to be fully modular resulting in a flexible system that's easily modified as needs change. Capabilities can be added or removed effortlessly, reducing the potential for a stranded investment. This is truly a "Pay as you go!" platform.

Integrated

With the capacity for four T1 network interfaces, the XSP-100 SHARK IAD can support up to 6 Mbps of integrated voice and data. In addition to SF and ESF, TR-08 Mode 1 operation is supported, enabling the SHARK IAD to integrate directly with a carrier's voice switch.

The SHARK IAD provides an integrated, easy-to-use I/O cross connect that controls the flow of DS0s from the network T1 to customer-side voice or data interfaces. The SHARK IAD will terminate up to 24 analog voice circuits and can also provide digital fractional T1 interfaces for direct connection to a PBX and delivery of data to an external router.

Trouble-free

The XSP-100 SHARK IAD has a full-featured IP router that provides an SNMP manageable LAN and network interface. The router was designed for easy installation and maintenance through its DHCP and NAT features. Also, the router has an integrated Frame Relay Assembler/Disassembler (FRAD) to handle any Frame Relay traffic from the network and hand it off to the customer via an auto-sensing 10/100Base-T Ethernet connection. The SHARK IAD's features can be set up easily via one of its many configuration interfaces. Whether you choose the graphic user interface using a Web browser or command line interface using a terminal emulator, the SHARK IAD will fit into your management architecture for provisioning and monitoring. Configuration can be accomplished remotely via telnet or IP, or locally via the craft port on the chassis. Both allow for full access to all of the services and features.



CTDI Products

XSP-100 SHARK Technical Specifications

Description

- XSP-100 SHARK® Integrated Access Device

WAN Ports

- Up to 4 T1 WAN ports
- T1 line rate – 1.544 Mbps with SF, ESF, and TR-08 framing
- B8ZS, AMI channel line code
- Bantam jacks (monitor only) and RJ-48C connector
- Loop or internal timing via Stratum 4 reference clock
- User-selectable DS0 assignment

Voice Ports

- Three analog voice ports (8 circuits per card)
- FXS, DPO, E&M Wink, E&M Wink Delay, FXO, and DPT signaling modes
- Supports CLASS, Loop Start, Ground Start, and Direct Inward Dial
- 5 REN per card
- Supports robbed bit signaling

Data Port (LAN)

- One 10/100Base-T port (auto-sensing)
- RJ-45 connector
- IEEE 802.3 compliant

IP Router

- Protocols supported: TCP/IP, PPP, LCP, UDP, ARP, PAP, CHAP, RIP V1 and V2, ICMP, DHCP, DNS, HTTP
- DHCP and NAT for IP address management
- SNMP/Telnet support
- Transparent Bridging

Frame Relay Access Device

- Supports RFC 1490, LMI Q.933 Annex A and LMI ANSI T1.617 Annex D
- Multiple Permanent Virtual Circuits

Network Management

- Full provision, monitor, and alarm capabilities for each interface
- Accessible through Web browser
- Multi-Level Password Protection
- SNMP Trap Reporting

Command Line Interface

- Access via RS-232 craft port, Ethernet, FDL, or dedicated DS0
- Inband IP, external modem, or Facility Data Link
- Remote download for software upgrade

Chassis

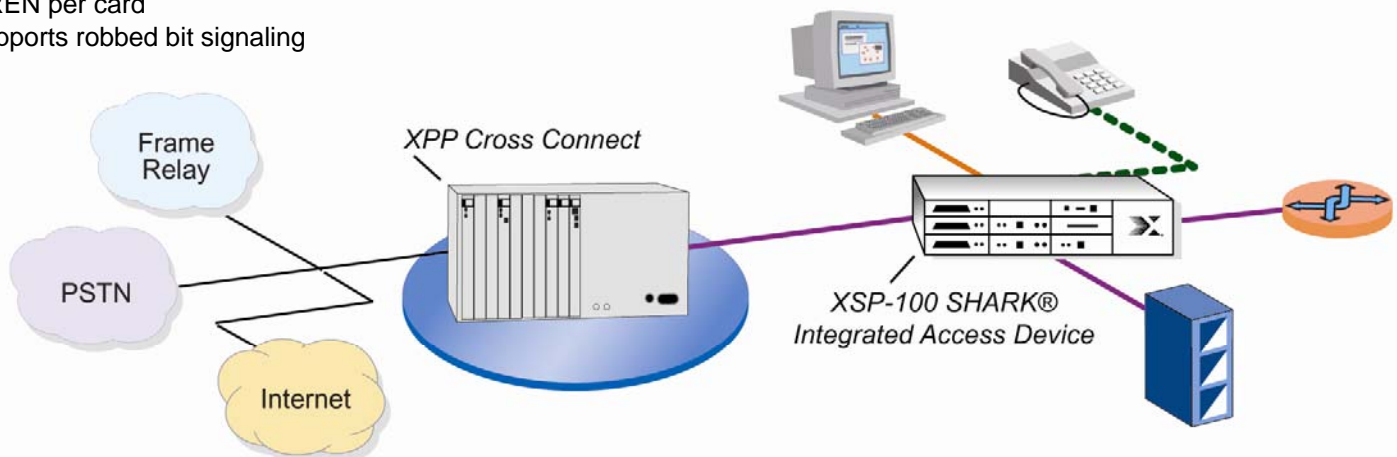
- NEBS Level 3 Certified
- 3.5" (2U) high x 17.5" wide x 13" deep
- Mounts on wall, 19" or 23" rack, or desktop
- Hinges available for swing-out wall mounting

Power

- -48 VDC
- 120 VAC with external converter (standard)

Warranty and Support

- One (1) year warranty



Legend

- | | | | |
|-------------|------------|----------|----------------------|
| Frame Relay | PBX | Router | 10/100 Base-T |
| PSTN | Video | Computer | T1/FT1 |
| Internet | POTS Lines | | Analog Voice FXS/FXO |