

The Mega-T/Mega-E family combines up to four T1 or E1 lines into a single, logical, high-speed data channel for practically any application.

By employing the simplest bit-based approach at the Layer 1 level of the serial bit stream, in a transparent inverse multiplexing operation, the Mega-T/Mega-E creates a channel that is entirely independent of the protocols, the data being transmitted, and of the network equipment.

The Mega-T 241 transports an E1 signal over two T1 lines, to connect local E1 voice and data applications directly to public or private T1 networks or extend an E1 circuit across a T1 network.

Housed in a compact, rack-mountable form, the Mega-T/Mega-E includes advanced monitoring and diagnostic functions.

The Mega-T/Mega-E inverse multiplexer provides an affordable solution for bridging the gap between T1/E1 and T3/E3.

BENEFITS

- Integrates easily into virtually any application, because it is protocol-independent
- Saves space with a compact, rack-mountable design
- Simplifies management with integral SNMP support, full-time performance monitoring, automatic alarm reporting, and extensive built-in diagnostics
- Provides economical access to greater-than T1/E1 bandwidth for high-speed applications

Mega-T/Mega-E™

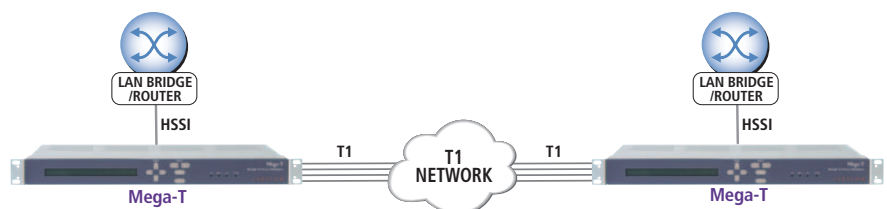
Bit-based Inverse Multiplexers



SPECIFICATIONS	
Power	
AC	Mega-T: 115 V AC, 50 to 60 Hz (AC to DC converter) Mega-E: 110/220 V AC, external converter available
DC	-48 V DC nominal (-43 to -53 V DC)
Amps/BTUs	0.5A max. @ -48V DC; 81.9 BTUs/hr
Network Interfaces	
Line Rate	Mega-T: T1 (1.544 Mbps); Mega-E: E1 (2.048 Mbps)
Framing	Mega-T: D4, ESF; Mega-E: G.704 with or without CRC
Line Coding	Mega-T: AMI, B8ZS; Mega-E: HDB3
Line Connector	DA15P
DTE Interfaces (not available for Mega-T 241)	
Data Rate	Mega-T: 1.528 Mbps per T1 line (3.056 Mbps to 6.112 Mbps) Mega-E: 1.976 Mbps per E1 line (3.952 Mbps to 7.904 Mbps)
Electrical	HSSI: TIA/EIA Committee TR 30.2 Proposal 2796 MECL-10KH EIA530: Configurable to V.35, X.21, RS449
Physical Interfaces	One SCSI-II (HSSI) or one DB25S (EIA530) port
E1 Data Port (Mega-T 241 only)	
Data Rate	2.048 Mbps
Framing	G.704 with or without CRC
Line Coding	HDB3
Line Connector	15-pin D-shell female
Management	
Front panel	80 character LCD, 8 keys, 4 LEDs
Terminal Interface	Two RS-232 (DE9P) ports, VT100 compatible
SLIP	SNMP
Physical Characteristics	
Usage	19"/23" rack mount
Size	1.75" H x 17" W x " x 12" D (4.4 x 43.2 x 30.5 cm);
Shipping Weight	9 lb. (4.0 kg)
Environment	
Operating	0 to 50 °C (32 to 122 °F); Up to 95% relative humidity, non-condensing

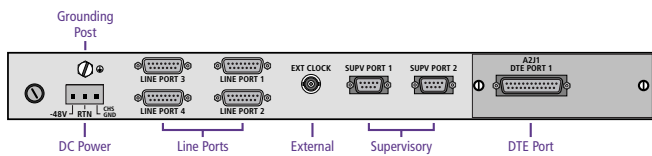
Typical Application

Here the Mega-T uses four T1 lines to create a high-speed 6.112 Mbps channel for a LAN internet-working application. The public network can be accessed directly through T1 access lines, as shown, or through an M13 router and T3 access line. The Mega-E creates a high-speed access channel for E1 networks.



BACK PANEL AND CABLE GUIDE	
	Model No.
Power	
DC power; AC to DC converter included	PWR-PS06
Network Port (DA15P)	
DA15S to RJ48C screw down connector	A80-LAK6-001
DA15S to DA15S, xx ft. (xx = 06, 15, 30, 50)	080-2283-0xx
DA15S to RJ48C, unkeyed, xx ft. (xx = M06, 015, 030, 050)	080-2563-xxx
Terminal Supervisory Port (DE9P)	
DE9S to DE9S, xx ft. (xx = 001, M06, 015, 030, 050)	080-2393-xxx
DTE Port	
HSSI (SCSI-II S)	
SCSI-II P to SCSI-II P, xx ft. (xx = 06, 15, 25, 50)	070-1203-0xx
HSD (EIA530, DB25P)	
V.35	
DB25P to M34S adapter, 1 ft.	DATAADAP-V35
DB25P to M34S, xx ft. (xx = 001, M06, 015, 025, 050)	080-2443-xxx
DB25P to M34P, xx ft. (xx = 06, 15, 25, 50)	080-2263-0xx
EIA530	
DB25P to DB25S, xx ft. (xx = 06, 15, 25, 50)	080-2333-0xx
DB25P to DB25P, xx ft. (xx = 06, 15, 25, 50)	080-2433-0xx
RS449	
DB25P to DC37S, xx ft. (xx = 06, 15, 25, 50)	080-2453-0xx
DB25P to DC37P, xx ft. (xx = 06, 15, 25, 50)	080-2273-0xx

Note: M = molded connector, P = plug (male), and S = socket (female).



ORDERING INFORMATION	
Mega-T Models	Model No.
Two T1 ports, EIA530 data port, front LCD, DSX interface	MEGAT-A201
Two T1 ports, EIA530 data port, front LCD, integral CSU	MEGAT-A201C
Two T1 ports, HSSI data port, front LCD, DSX interface	MEGAT-A211
Two T1 ports, HSSI data port, front LCD, integral CSU	MEGAT-A211C
Two T1 ports, DSX interface, no DIM	MEGAT-A002
Two T1 ports, integral CSU, no DIM	MEGAT-A002C
Two T1 ports, 120-ohm E1 port, DSX interface	MEGAT-A241C
Two T1 ports, 120-ohm E1 port, integral CSU	MEGAT-A241C
Four T1 ports, EIA530 data port, front LCD, DSX interface	MEGAT-A401
Four T1 ports, EIA530 data port, front LCD, integral CSU	MEGAT-A401C
Four T1 ports, HSSI data port, front LCD, DSX interface	MEGAT-A411
Four T1 ports, HSSI data port, front LCD, integral CSU	MEGAT-A411C
Four T1 ports, DSX interface, no DIM	MEGAT-A001
Four T1 ports, integral CSU, no DIM	MEGAT-A001C
Mega-E Models	
Four E1 ports, EIA530 data port, front LCD, integral CSU	MEGAE-401C
Four E1 ports, HSSI data port, front LCD, integral CSU	MEGAE-411C
Four E1 ports, integral CSU, no DIM	MEGAE-001C
Mega-T Bundles	
MEGAT-A201C, two A80-LAK6-001 RJ48C T1 connectors, 080-2443-M06 V.35 cable (6 ft.), 080-2393-M06 supervisory cable (6 ft.), manuals, installation, and Silver Service	B-MT-1
MEGAT-A211C, two A80-LAK6-001 RJ48C T1 connectors, 070-1203-006 HSSI cable (6 ft.), 080-2393-M06 supervisory cable (6 ft.), manuals, installation, and Silver Service	B-MT-2
MEGAT-A401C, four A80-LAK6-001 RJ48C T1 connectors, 080-2443-M06 V.35 cable (6 ft.), 080-2393-M06 supervisory cable (6 ft.), manuals, installation, and Silver Service	B-MT-3
MEGAT-A411C, four A80-LAK6-001 RJ48C T1 connectors, 070-1203-006 HSSI cable (6 ft.), 080-2393-M06 supervisory cable (6 ft.), manuals, installation, and Silver Service	B-MT-4
Related Products	
Service Programs	See page 78
DTE interface module, providing one EIA530 port	DIM-101
DTE interface module, providing one HSSI port	DIM-111
Mega-T DTE interface module, providing one 120-ohm E1 port	DIM-141
Mega-T/E 240/110 V AC 50/60 Hz external power supply, British power cord, CE mark	PWR-AC7
Mega-E 110 V AC, 60 Hz external power supply, integral US power cord	PWR-AC1
Mega-E 240/110 V AC 50/60 Hz external power supply, Australia only	PWR-AC5
Mega-E 240/110 V AC 50/60 Hz external power supply, US power cord, CE mark	PWR-AC6
Mega-E 240/110 V AC 50/60 Hz external power supply, European style power cord, CE mark	PWR-AC8
Mega-T converter, AC to DC	PWR-PS06
Mega-T power supply, AC to DC	650-548-06
Mega-T 50-pin RJ48H to multiple unkeyed RJ48C connector cable (for older versions of Mega-T)	070-1613-006

Typical Application II

The Mega-T 241 transports E1 traffic over two T1 lines to extend an E1 circuit across a T1 network, or connect an E1 multiplexer, channel bank, or PBX directly to a public or private T1 network.

