

The TerraBoss II and TerraUno II combine easy configuration and management and a space-saving design in global T1/E1 DSUs. They provide worldwide connectivity for both small-office desktops and international networks.

LineLearn™ capability automatically configures to a T1 or E1 line. The network port supports T1/E1 and the serial port supports V.35/X.21/RS449/EIA530. External DTE clocking and unframed E1 capabilities support satellite and E1 clear-channel applications.

The TerraBoss II and TerraUno II provide advanced configuration, monitoring, and diagnostic features through terminal and front-panel interfaces. The TerraBoss II also provides a wider range of management options including a web interface, an integral SNMP agent, Telnet via 10Base-T Ethernet, and an email agent.

The TerraBoss II and TerraUno II offer a compact horizontal design in a metal case that is only one RU high and eight inches wide. They fit easily on a desktop, or two of these units can be mounted side-by-side in a 19- or 23-inch tray.

The TerraBoss II and TerraUno II deliver connectivity, simple installation and management, and a space-efficient footprint for less than many bare bones TI/EI DSUs.

BENEFITS

- Maximizes valuable rack space with a compact design
- Provides a single solution for T1 and E1 applications
- Minimizes set-up time with plug-and-play installation
- Makes troubleshooting quick and accurate with graphical test set and comprehensive diagnostic functions
- Provides compatibility with V.35, RS449, EIA530, and X.21 serial interfaces through a single data port
- Simplifies network operations with email alerts, Telnet access, SNMP, and a web browser interface

TerraUno II™ and TerraBoss II™

T1/E1 DSUs

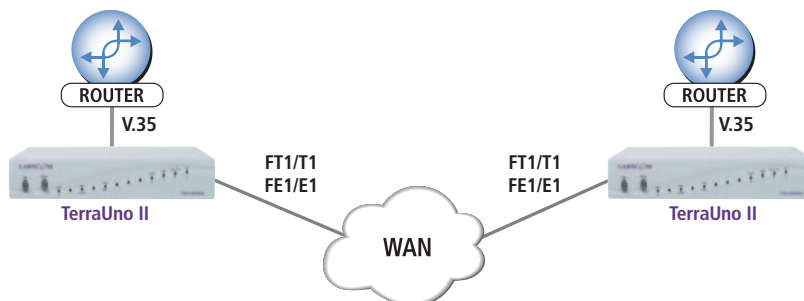


SPECIFICATIONS

SPECIFICATIONS	
Power	
AC	100 to 240 V AC, 50/60 Hz, 9 watts; converter provided
DC	9V DC
Amps/BTUs	1A@9V DC, 30.7 BTUs/hr
Network Interface	
Line Rate	T1:1.544 Mbps, E1:2.048 Mbps
Framing	T1: D4, ESF; E1: G.703, G.704; E1 unframed
Line Coding	T1: AMI, B8ZS; E1: HDB3
Physical Interface	RJ48C (BNC with 75-ohm cable adapter)
DTE Interface	
Data Rate	Nx56 Kbps or Nx64 Kbps (N = 1 to 24 for T1 and 1 to 31 for E1)
Electrical	EIA530 configurable to V.35, X.21, RS442/449
Physical Interface	DB25S port
Management	
Front Panel	2 buttons, 7 LEDs
Terminal Interface	RS-232 (DE9P), VT100 compatible (TerraUno II and TerraBoss II)
10Base-T Ethernet	SNMP, SMTP, Telnet, web browser (TerraBoss II)
Physical Characteristics	
Usage	Desktop, 19"/23" Tray mount (two units)
Size	Metal enclosure, 1.75" H x 8" W x 7.5" D (20.3 x 4.5 x 19.1 cm)
Shipping Weight	5 lb. (2.27 kg)
Environment	
Operating	0 to 50° C (32 to 122° F); Up to 95% relative humidity, non-condensing

Typical Application

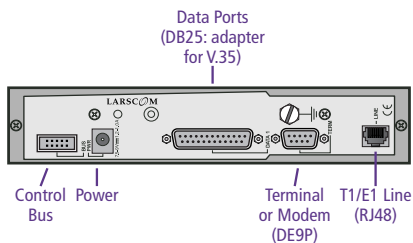
Here, the TerraUno IIs connect internal routers to Internet services using a FT1/FE1 and serve as the demarcation point between internal LAN and the public WAN.



BACK PANEL AND CABLE GUIDE

	Model No.
Control Bus Port	
Bus ribbon cable, tray, connects TerraMux II to TerraUno II	BUSCABL-TRAY
Bus ribbon cable, connects TerraMux II and up to four TerraUno II units	BUSCABLE-005
DTE Port (EIA530, DB25S)	
V.35	
Adapter, molded DB25P-M34S, DCE-DTE 2.5" one included	A80-LAK10-001
DB25P to M34S adapter, 1 ft.	DATAADAP-V35
DB25P to M34S, (EIA530 to V.35) xx ft.	080-2443-xxx
(xx = 001, M06, 015, 025, 050)	
DB25P to M34P, (EIA530 to V.35) xx ft. (xx = 06, 15, 25, 50)	080-2263-0xx
EIA530	
DB25P to DB25S, (EIA530 to EIA530) xx ft. (xx = 06, 15, 25, 50)	080-2333-0xx
DB25P to DB25P, (DCE to DTE) xx ft. (xx = 06, 15, 25, 50)	080-2433-0xx
DB25P to DB25P, (DCE to DCE) xx ft. (xx = 06, 15, 25, 50)	080-2373-0xx
RS449	
DB25P to DC37S, (EIA530 to RS449) xx ft. (xx = 06, 15, 25, 50)	080-2453-0xx
Terminal Supervisory Port (DE9P)	
DE9S to DE9S, xx ft. (xx = 001, M06, 015, 030, 050)	080-2393-xxx
Network Port (RJ48C)	
RJ48C to RJ48C, 14 ft. (included)	410-065-32
Adapter, RJ48C 120-ohm to 75-ohm BNC	190-701-54
10Base-T Ethernet Port For Management (RJ45) - TerraBoss II	

Note: M = molded connector, P = plug (male), and S = socket (female).



ORDERING INFORMATION

TerraUno II and TerraBoss II Models	Model No.
TerraUno II with 14 ft. RJ48C T1 line cable	TERRAUNO-II-NA1
TerraUno II with 14 ft. RJ48C T1 line cable and 75-ohm balun	TERRAUNO-II-NA2
Terra Uno II for EU countries	TERRAUNO-II-EU1
TerraUno II for EU countries with 75-ohm balun	TERRAUNO-II-EU2
TerraUno II with UK 3 prong	TERRAUNO-II-UK1
TerraBoss II with 14 ft. RJ48C T1 line cable	TERRABOSS-II-NA1
TerraBoss II with 14 ft. RJ48C T1 line cable and 75-ohm balun	TERRABOSS-II-NA2
TerraBoss II for EU countries	TERRABOSS-II-EU1
TerraBoss II for EU countries with 75-ohm balun	TERRABOSS-II-EU2
TerraBoss II with UK 3 prong and 75-ohm balun	TERRABOSS-II-UK1
TerraUno II Bundles	
TERRAUNO-II-NA1, RJ48C T1 line cable (14 ft.), molded DB25P-M34S, DCE-DTE 2.5" shielded adapter, 080-2393-M06 supervisory cable (6 ft.), DATAADAPT-V35 V.35 adapter (1 ft.), manuals, and Silver Service	B-TE4
TerraBoss II Bundles	
TERRABOSS-II-NA1, RJ48C T1 line cable (14 ft.), molded DB25P-M34S, DCE-DTE 2.5" shielded adapter, 080-2393-M06 supervisory cable (6 ft.), DATAADAPT-35 V.35 adapter (1 ft.), Ethernet port, manuals, and Silver Service	B-TE5
Related Products	
Service Programs	See page 78
Tray, Terra-II, 1RU, holds two TerraUno II units or one TerraBoss II or TerraMux II unit with one TerraUno II unit	TERRA-II-TRAY
Tray extension, holds one converter power supply	TERRA-II-TRAY-EXT
Power supply, 100 to 240 V AC, 50/60 Hz	WANMAKER-P02



Typical Application II

An enterprise greatly simplifies the installation and support of private network communications between global sites with TerraUno II. Multiple TerraUno IIs located at corporate headquarters and managed through a TerraBoss II or TerraMux II service heavy CAD/CAM and data traffic. Remote TerraUno II units provide a web interface and email alerts.

